

# Use Google Drive File Stream on Windows

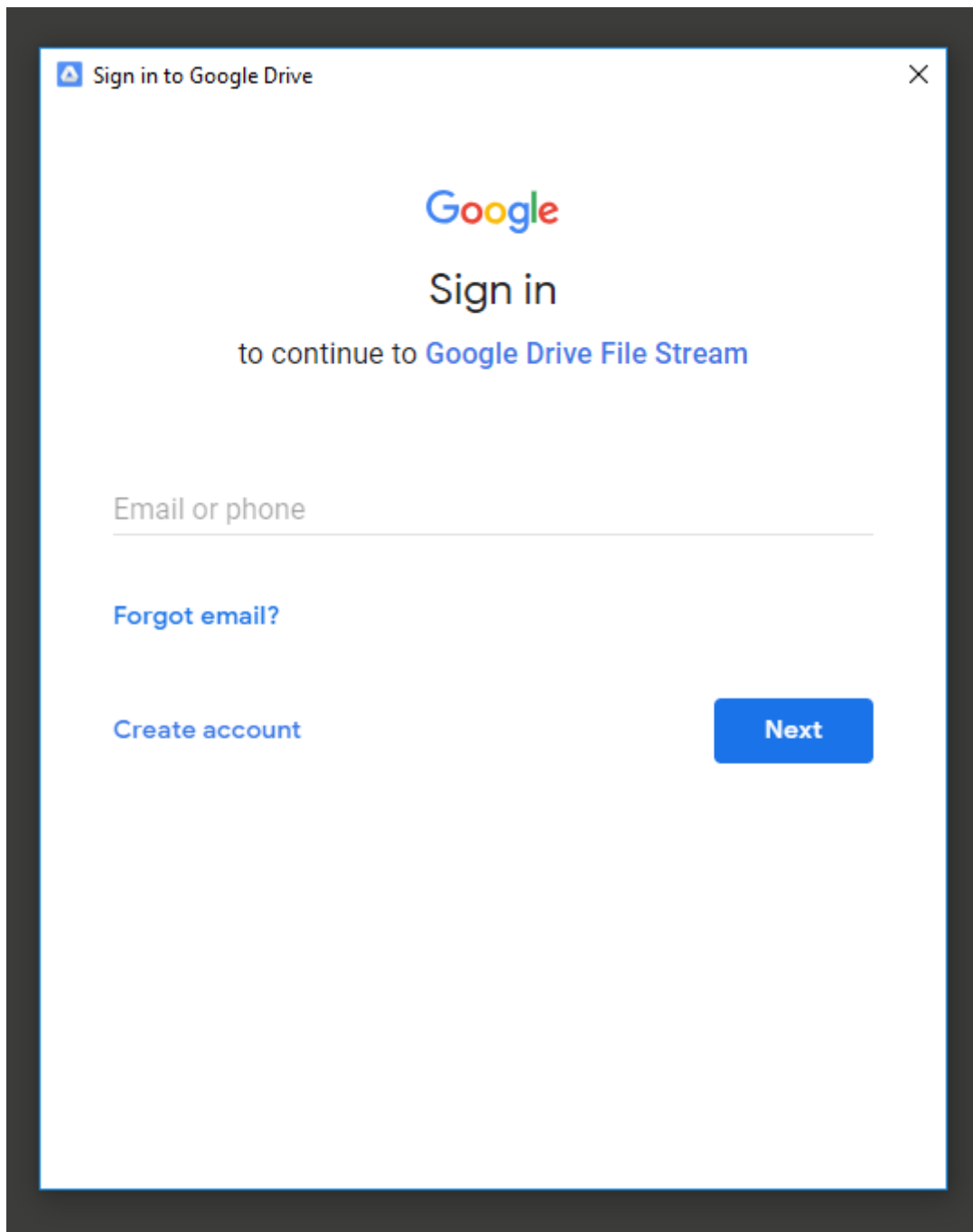
Google Drive File Stream is an application that enables access to Google Drive and Google Team Drive files as if they were network drives (like the U and P drives). This method of access provides a best of both worlds scenario that combines the speed of a local file browser with all the benefits of the cloud. This article details the self-service process of installing, configuring, and troubleshooting problems with Google Drive File Stream.

## Installing Google Drive File Stream

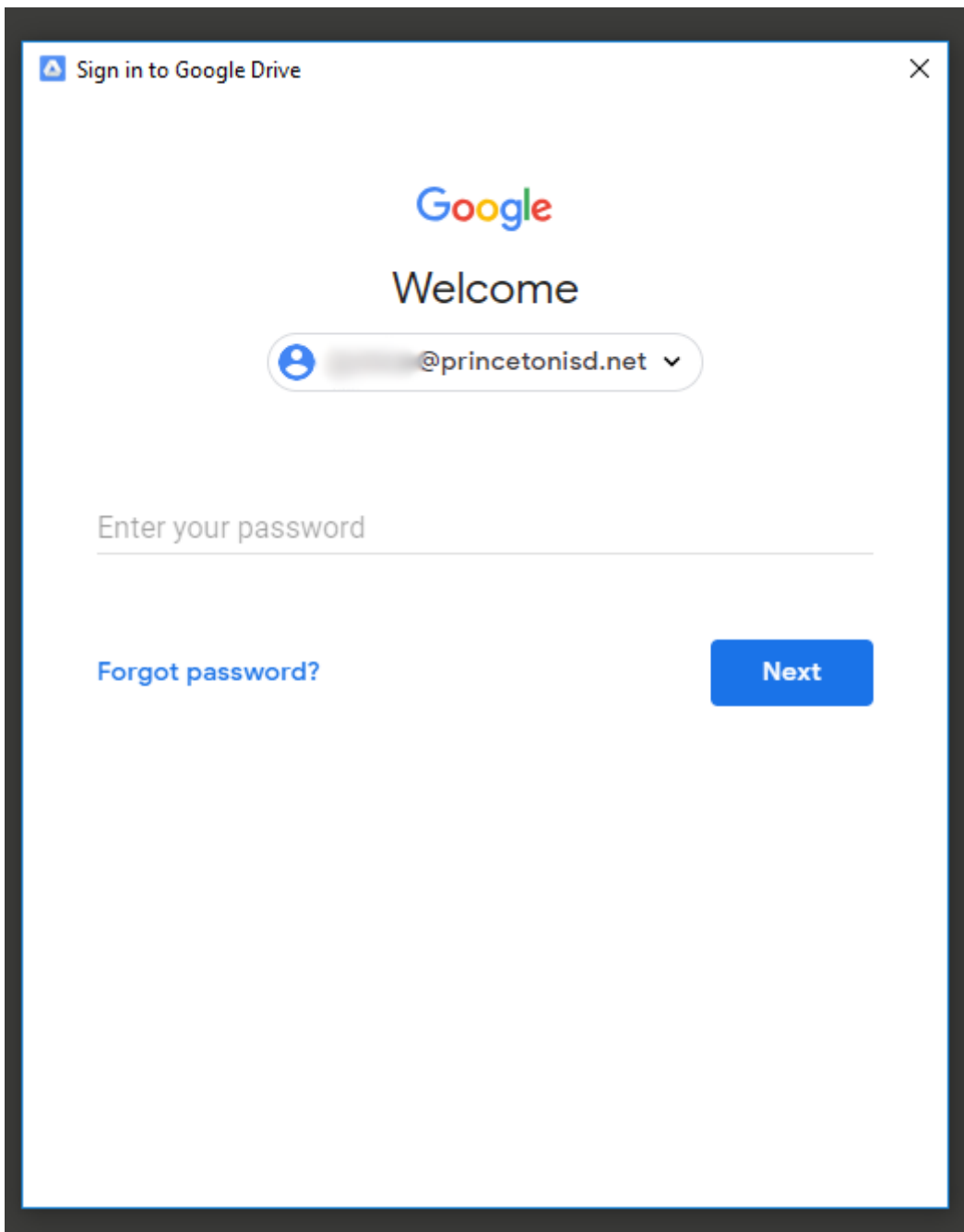
Google Drive File Stream can be installed using the FileWave Kiosk. Detailed instructions are located and available in the [Using the App Portal on Windows](#) KB article ([link](#)).

## Configuring Google Drive File Stream

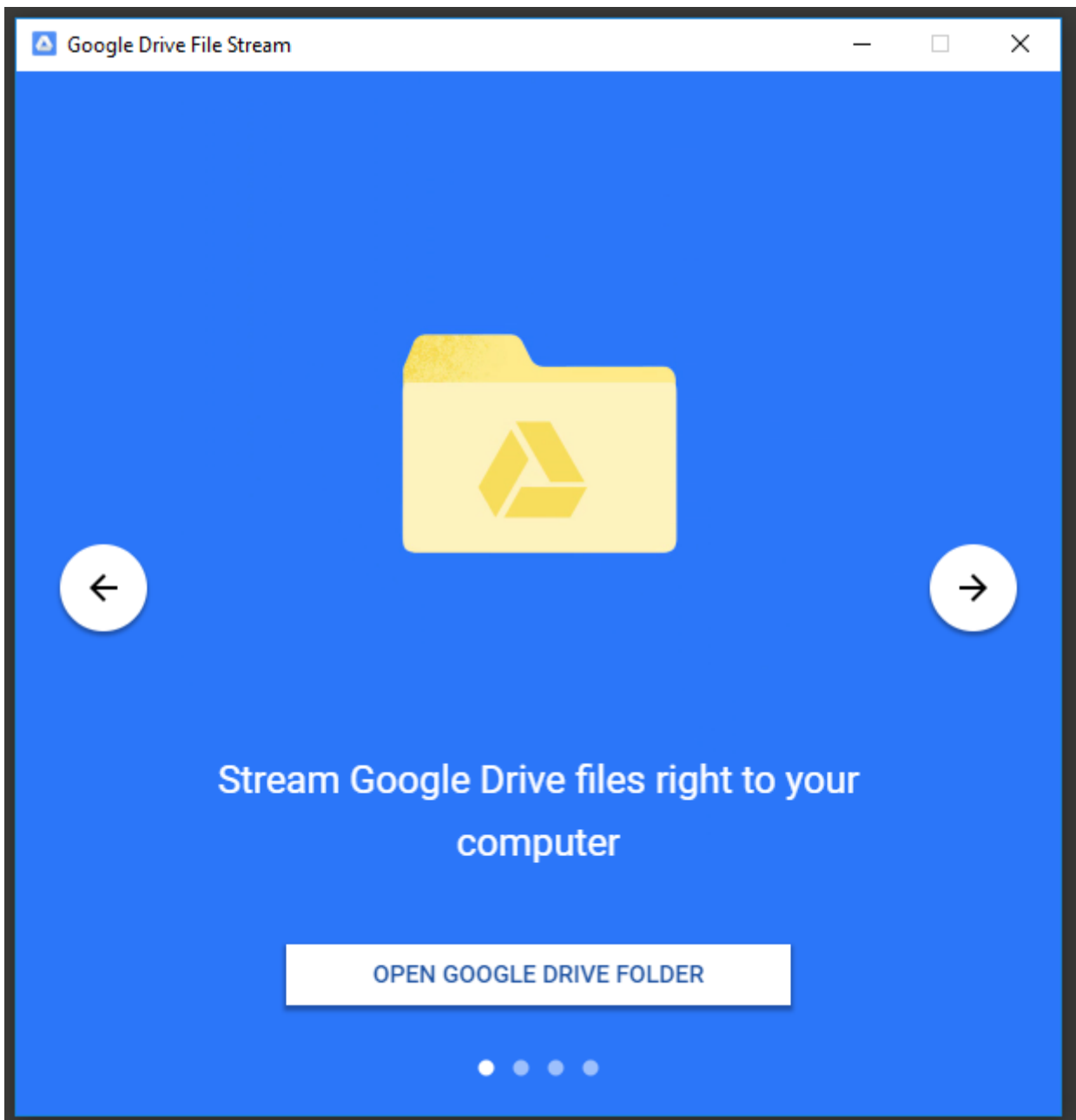
1. Once the installation process has completed you should be prompted with a login screen that looks like the below image. Enter your district email ending in @princetonisd.net and click Next.



2. On the next page you will be prompted for a password. Enter your email password and click Next.



3. Once you have signed in, you will be presented with a short set of slides which provide some helpful information about Google Drive File Stream. At this point the setup is complete. Click OPEN GOOGLE DRIVE FOLDER to be taken to your files.



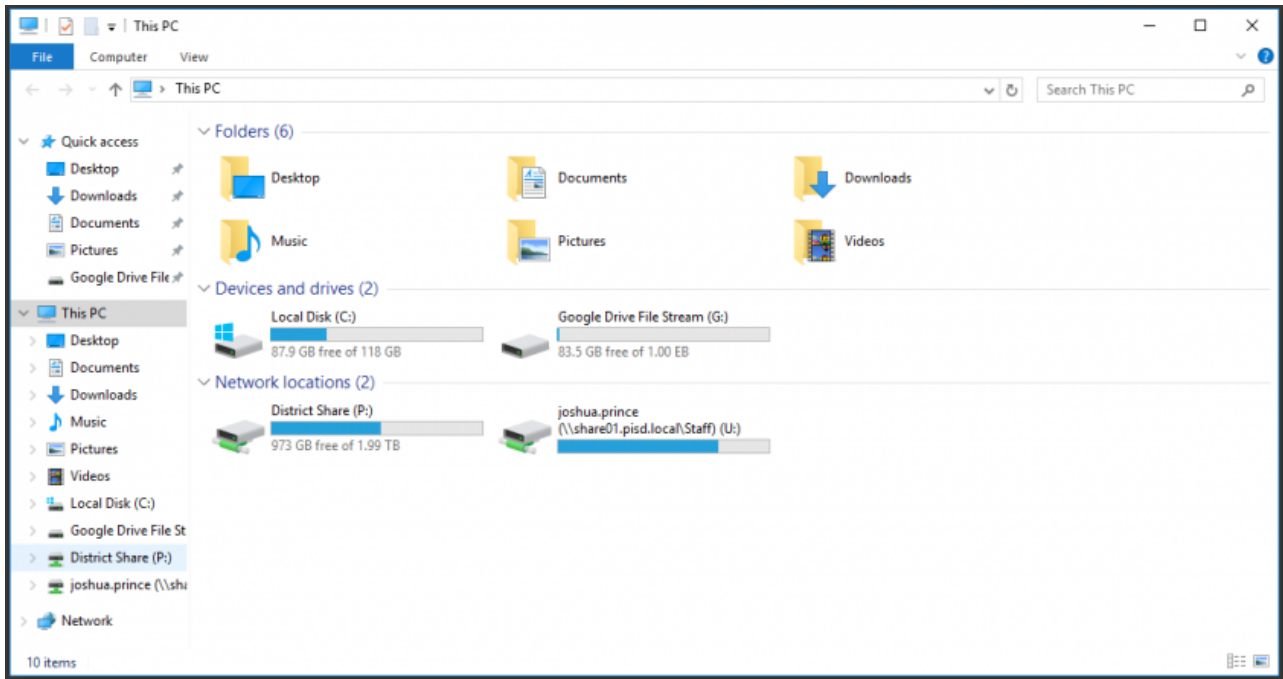
# Accessing Files Using Google Drive File Stream

Google Drive File Stream is accessed in the same way that all other network drives (like U and P) are accessed. The quickest way is to use the folder icon on the task bar.

1. Click the folder icon on the task bar.



2. Double-Click Google Drive File Stream (G:).

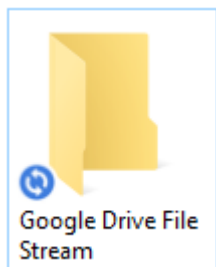


# Understanding Icon Badges

There are three basic badges that indicate the status of a file in Google Drive File Stream. They are as follows:

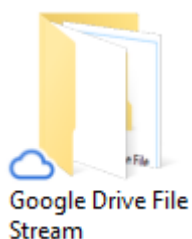
## Uploading

**This state may also be represented by the absence of a badge.**



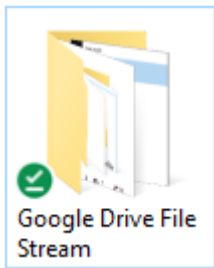
The file is in the process of being uploaded and is not yet available from the cloud.

## Available Online



The file has been uploaded and can be opened as long as there is an available internet connection.

## Available Offline



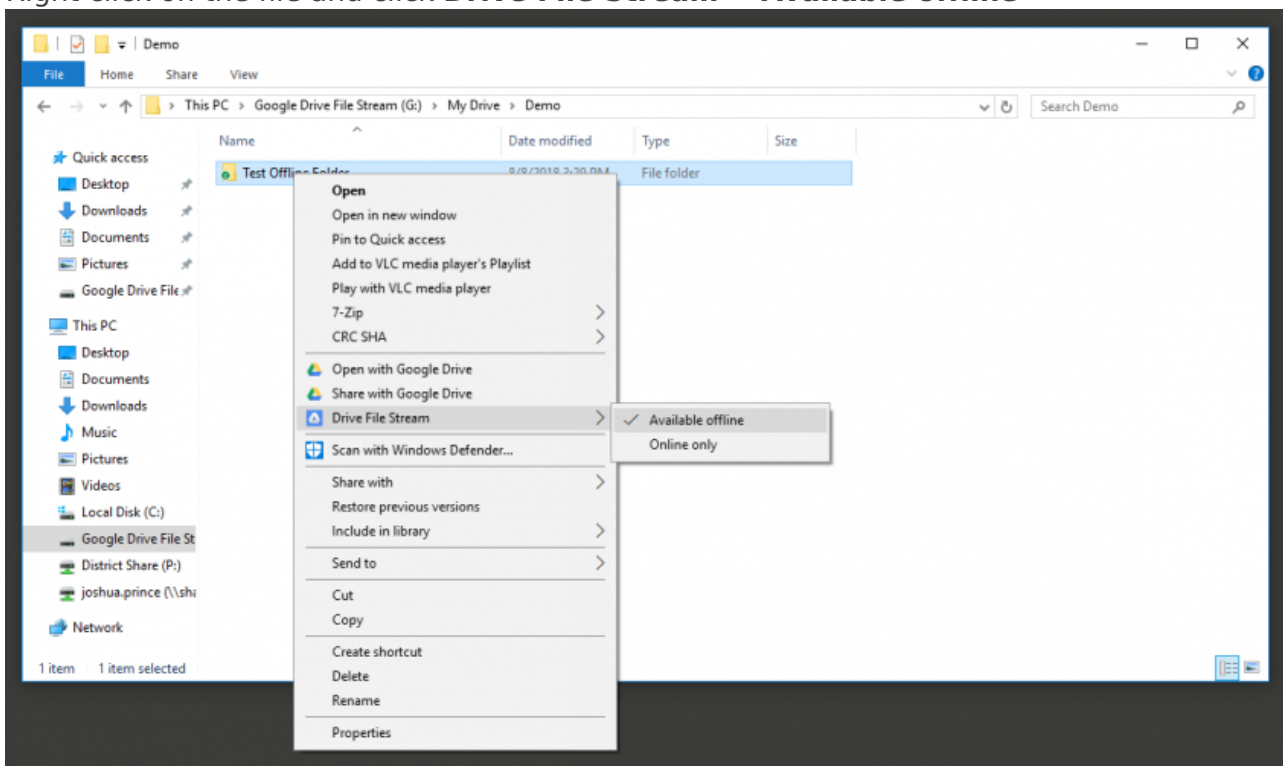
The file has been uploaded but a copy has been kept offline so that it can be used without access to the internet.

## Online and Offline Files

By default, all files in Google Drive File Stream are stored in the cloud. For most files, this is the best option. There are some situations, though, where it makes sense to store files offline. This is helpful when working from a location with no internet or very slow internet or when dealing with large files like videos.

## Make a file Available Offline

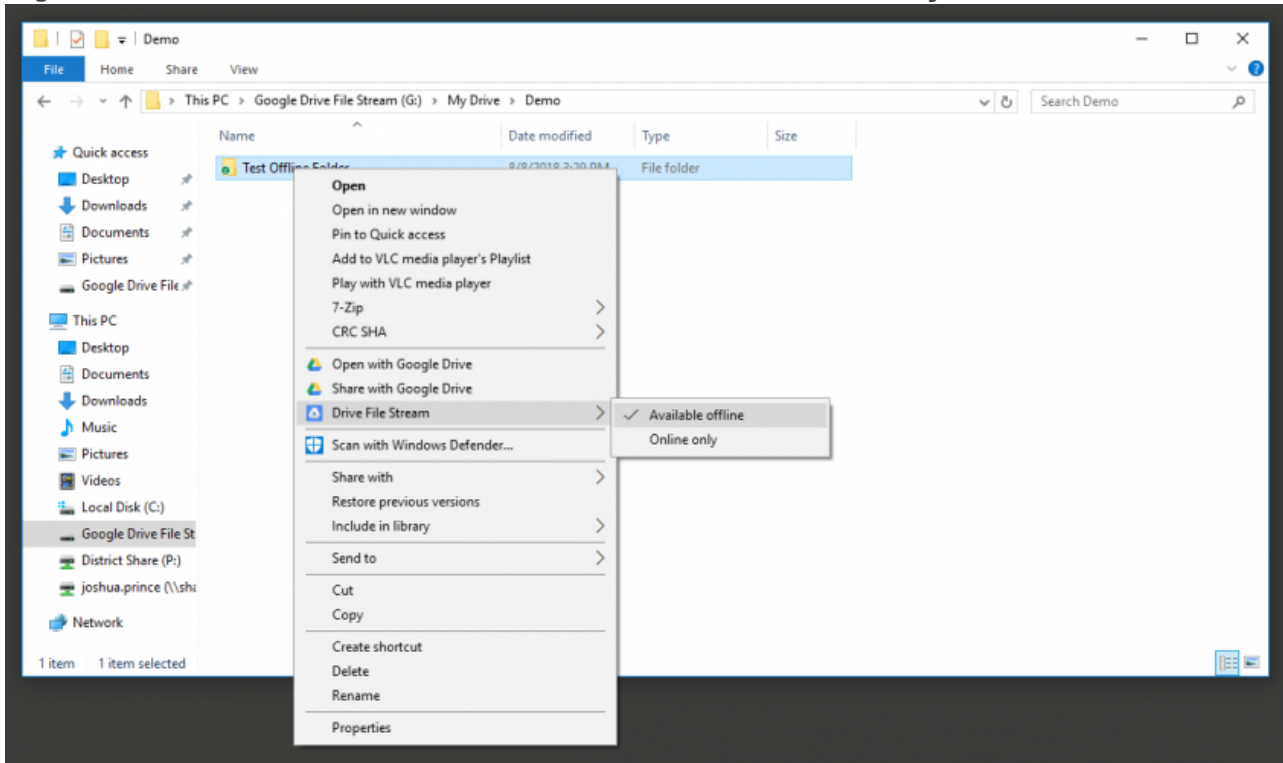
1. Right click on the file and click **Drive File Stream > Available offline**



2. The badge on the icon for that file should change from a cloud to a green check.

# Make a file Online Only

1. Right click on the file and click **Drive File Stream > Online Only**



2. The badge on the icon for that file should change from a green check to a cloud.

## Troubleshooting

### Google Drive File Stream is no longer showing up as a drive

Sometimes the Google Drive File Stream application will stop working and need to be started again. The process can usually be accomplished by rebooting but can also be accomplished with the following steps.

1. Click on the Start menu in the lower-left corner of the screen.



## 2. Type **File Stream**



## 3. Click **Drive File Stream**

# I added a file to Google Drive File Stream but I don't see it in Google Drive on the web

Depending on the size of the file and the speed of the internet connection it may take some time for files to actually appear in Google Drive on the web (or on other machines with Google Drive File Stream). See [Understanding Icon Badges](#).

Revision #13

Created 8 August 2018 21:43:38 by Joshua Prince

Updated 18 February 2020 21:18:51 by Joshua Prince